

ABO blood type & SARS-CoV-2_Search strategy

MEDLINE (Pubmed) (2020 to May 2021)

"COVID-19"[Mesh]) OR "SARS-CoV-2 variants" [Supplementary Concept]) OR "SARS-CoV-2"[Mesh]) OR "2019 novel coronavirus disease" OR COVID19 OR "COVID-19 pandemic" OR "SARS-CoV-2 infection" OR "COVID-19 virus disease" OR "2019 novel coronavirus infection" OR "2019-nCoV infection" OR "coronavirus disease 2019" OR "coronavirus disease-19" OR "2019-nCoV disease" OR "COVID-19 virus infection" OR "2019-nCoV" OR "Wuhan coronavirus" OR "SARS-CoV-2" OR "2019 novel coronavirus" OR "COVID-19 virus" OR "coronavirus disease 2019 virus" OR "COVID19 virus" OR "Wuhan seafood market pneumonia virus" AND "ABO Blood-Group System"[Mesh]) OR "Rh-Hr Blood-Group System"[Mesh]) OR ("ABO Blood Group System*"[Title/Abstract] OR "ABO Blood-Group System*"[Title/Abstract] OR "ABO Factor*"[Title/Abstract] OR "ABO blood group*"[Title/Abstract] OR "blood type"[Title/Abstract] OR "blood group*"[Title/Abstract] OR "ABO Group*"[Title/Abstract] OR "Blood type A"[Title/Abstract] OR "Blood type B"[Title/Abstract] OR "Blood type AB"[Title/Abstract] OR "Blood type O"[Title/Abstract] OR "ABO blood type*"[Title/Abstract] OR "ABO Blood-Group System*"[Title/Abstract] OR "Rh-Hr Blood-Group System"[Title/Abstract] OR "Rh Hr Blood Group System*"[Title/Abstract] OR "Rhesus Blood-Group System*"[Title/Abstract] OR "Rhesus Blood Group System*"[Title/Abstract])

Embase (2020 to May 2021)

#1 'covid 19'/exp
#2 '2019 novel coronavirus disease' OR covid19 OR 'covid-19 pandemic' OR 'sars-cov-2 infection' OR 'covid-19 virus disease' OR '2019 novel coronavirus infection' OR '2019-ncov infection' OR 'coronavirus disease 2019' OR 'coronavirus disease-19' OR '2019-ncov disease' OR 'covid-19 virus infection' OR '2019-ncov' OR 'wuhan coronavirus' OR 'sars-cov-2' OR '2019 novel coronavirus' OR 'covid-19 virus' OR 'coronavirus disease 2019 virus' OR 'covid19 virus' OR 'wuhan seafood market pneumonia virus' OR ncov OR covid:ti,ab
#5 #1 OR #2 OR #3 OR #4
#6 'blood group abo system'/exp/mj OR 'blood group rhesus system'/exp/mj
#7 'abo blood group* system*' OR 'abo factor*' OR 'abo blood group*' OR 'blood type' OR 'blood group*' OR 'abo group*' OR 'blood type a' OR 'blood type b' OR 'blood type ab' OR 'abo blood type*' OR 'abo blood-group system*' OR 'rh-hr blood-group system' OR 'rh hr blood group system*' OR 'rhesus blood-group system*' OR 'rhesus blood group system*' OR 'rh factor*' OR 'rh factor':ti,ab
#8 #6 OR #7
#9 #5 AND #8
#10 #5 AND #8 AND [embase]/limAND [2020-2021]/py

Cochrane Central Register of Controlled Trials (CENTRAL; 2021, Issue 5) in the Cochrane Library (searched May 2021)

#1 MeSH descriptor: [Coronavirus Infections] explode all trees
#2 MeSH descriptor: [COVID-19] explode all trees
#3 MeSH descriptor: [] explode all trees
#4 MeSH descriptor: [SARS-CoV-2] explode all trees
#5 ('Coronavirus Infection'):ti,ab,kw
#6 ('2019 novel coronavirus disease'):ti,ab,kw
#7 'COVID-19 pandemic'
#8 (COVID19):ti,ab,kw
#9 ('COVID-19 pandemic'):ti,ab,kw
#10 ('SARS-CoV-2 infection' OR 'COVID-19 virus disease'):ti,ab,kw
#11 '2019 novel coronavirus infection'
#12 ('coronavirus disease 2019'):ti,ab,kw
#13 ('coronavirus disease-19' OR 'COVID-19 virus infection'):ti,ab,kw

Table S1: ABO blood type & SARS-CoV-2_Search strategy

**NEWCASTLE - OTTAWA QUALITY ASSESSMENT SCALE
CASE CONTROL STUDIES**

Note: A study can be awarded a maximum of one star for each numbered item within the Selection and Exposure categories. A maximum of two stars can be given for Comparability.

Selection

- 1) Is the case definition adequate?
 - a) yes, with independent validation
 - b) yes, eg record linkage or based on self reports
 - c) no description
- 2) Representativeness of the cases
 - a) consecutive or obviously representative series of cases
 - b) potential for selection biases or not stated
- 3) Selection of Controls
 - a) community controls
 - b) hospital controls
 - c) no description
- 4) Definition of Controls
 - a) no history of disease (endpoint)
 - b) no description of source

Comparability

- 1) Comparability of cases and controls on the basis of the design or analysis
 - a) study controls for _____ (Select the most important factor.)
 - b) study controls for any additional factor (This criteria could be modified to indicate specific control for a second important factor.)

Exposure

- 1) Ascertainment of exposure
 - a) secure record (eg surgical records)
 - b) structured interview where blind to case/control status
 - c) interview not blinded to case/control status
 - d) written self report or medical record only
 - e) no description
- 2) Same method of ascertainment for cases and controls
 - a) yes
 - b) no
- 3) Non-Response rate
 - a) same rate for both groups
 - b) non respondents described
 - c) rate different and no designation

**NEWCASTLE - OTTAWA QUALITY ASSESSMENT SCALE
COHORT STUDIES**

Note: A study can be awarded a maximum of one star for each numbered item within the Selection and Outcome categories. A maximum of two stars can be given for Comparability

Selection

- 1) Representativeness of the exposed cohort
 - a) truly representative of the average _____ (describe) in the community
 - b) somewhat representative of the average _____ in the community
 - c) selected group of users eg nurses, volunteers
 - d) no description of the derivation of the cohort
- 2) Selection of the non exposed cohort
 - a) drawn from the same community as the exposed cohort
 - b) drawn from a different source
 - c) no description of the derivation of the non exposed cohort
- 3) Ascertainment of exposure
 - a) secure record (eg surgical records)
 - b) structured interview
 - c) written self report
 - d) no description
- 4) Demonstration that outcome of interest was not present at start of study
 - a) yes
 - b) no

Comparability

- 1) Comparability of cohorts on the basis of the design or analysis
 - a) study controls for _____ (select the most important factor)
 - b) study controls for any additional factor (This criteria could be modified to indicate specific control for a second important factor.)

Outcome

- 1) Assessment of outcome
 - a) independent blind assessment
 - b) record linkage
 - c) self report
 - d) no description
- 2) Was follow-up long enough for outcomes to occur
 - a) yes (select an adequate follow up period for outcome of interest)
 - b) no
- 3) Adequacy of follow up of cohorts
 - a) complete follow up - all subjects accounted for
 - b) subjects lost to follow up unlikely to introduce bias - small number lost - > ____ % (select an adequate %) follow up, or description provided of those lost)
 - c) follow up rate < ____% (select an adequate %) and no description of those lost
 - d) no statement

Figure S1: Newcastle Ottawa Scale;

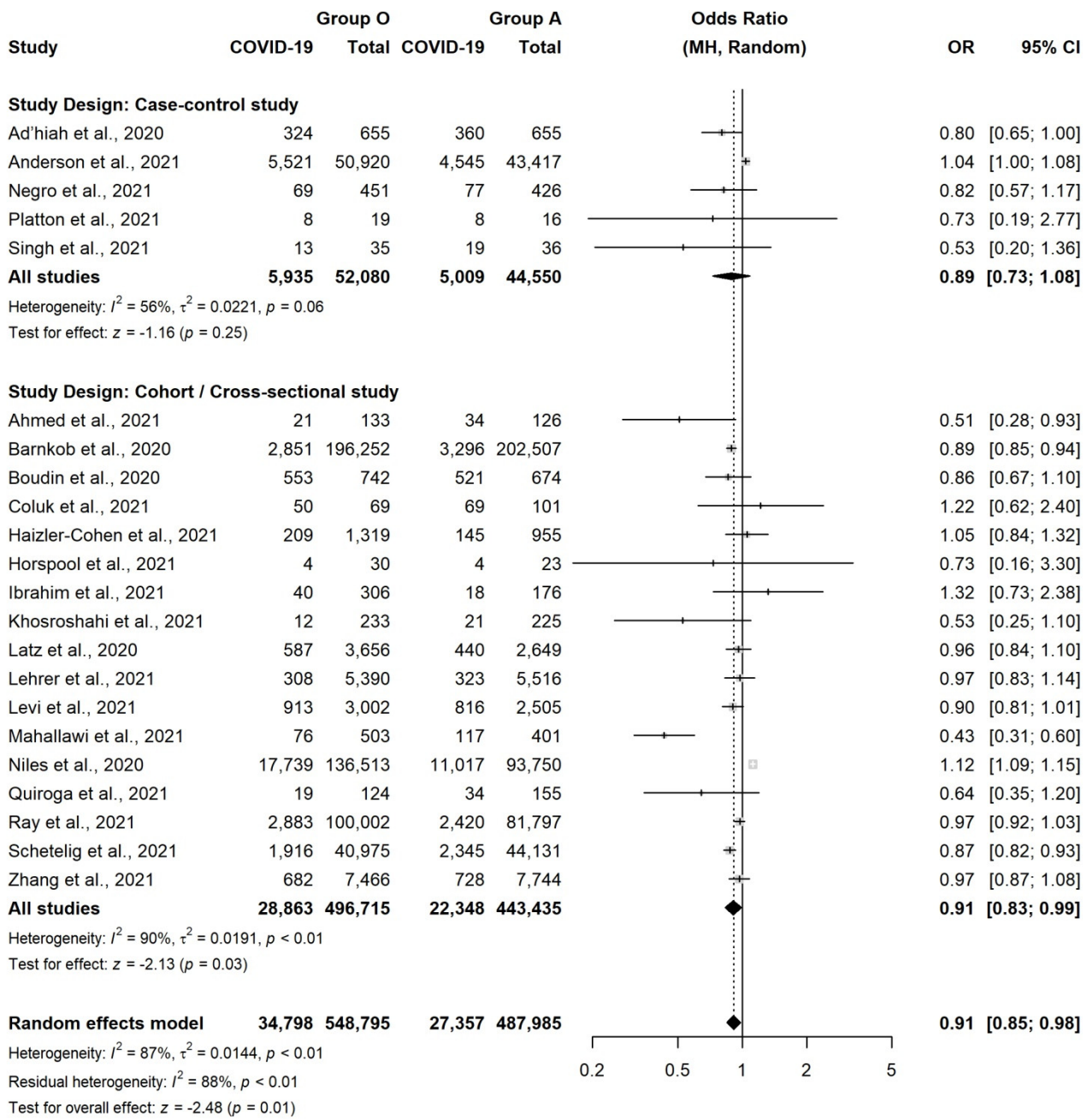


Figure S2: Forest plot for the occurrence of SARS-CoV-2 infection in patients with Blood Group O versus Group A

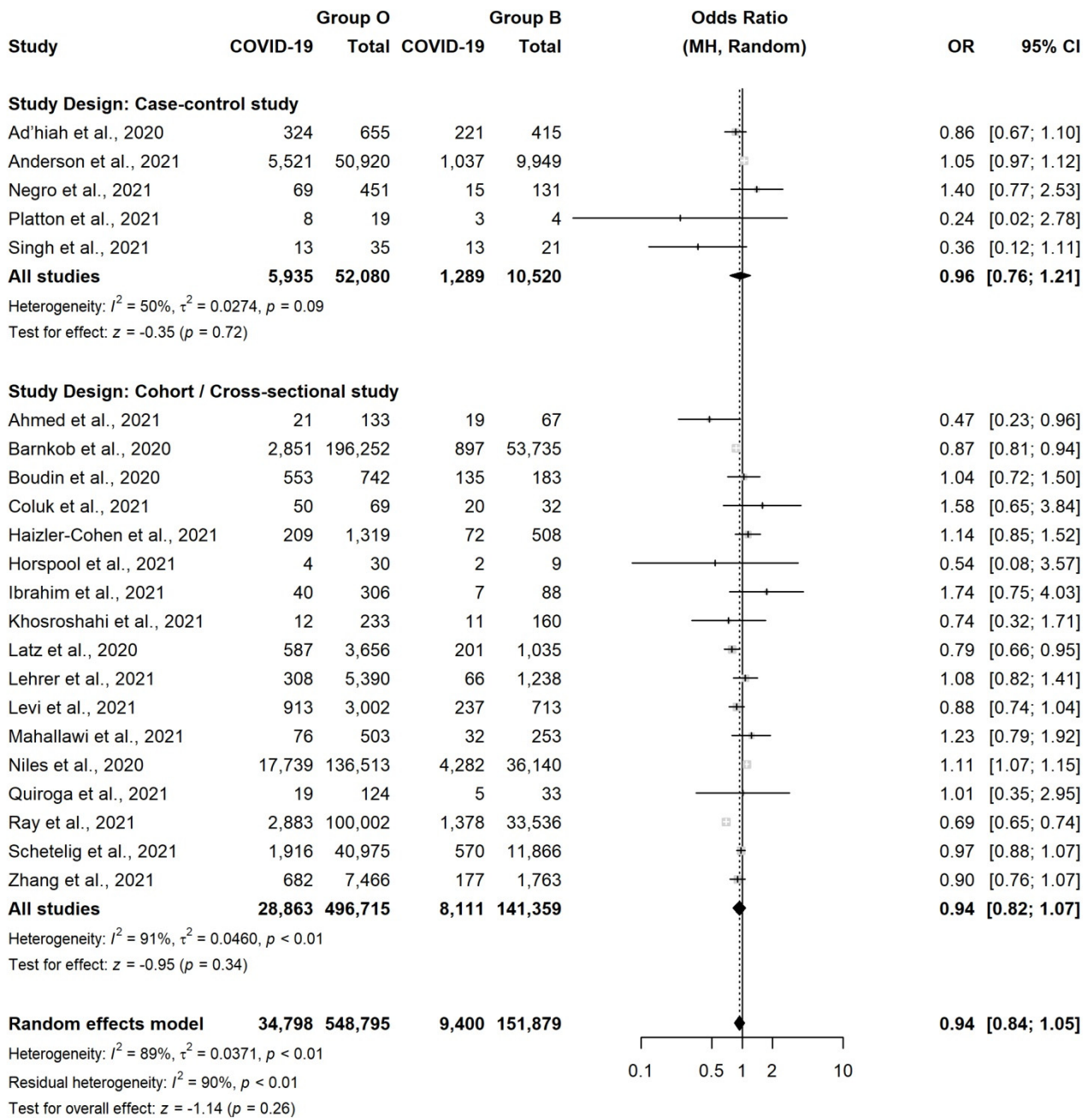


Figure S3: Forest plot for the occurrence of SARS-CoV-2 infection in patients with Blood Group O versus Group B

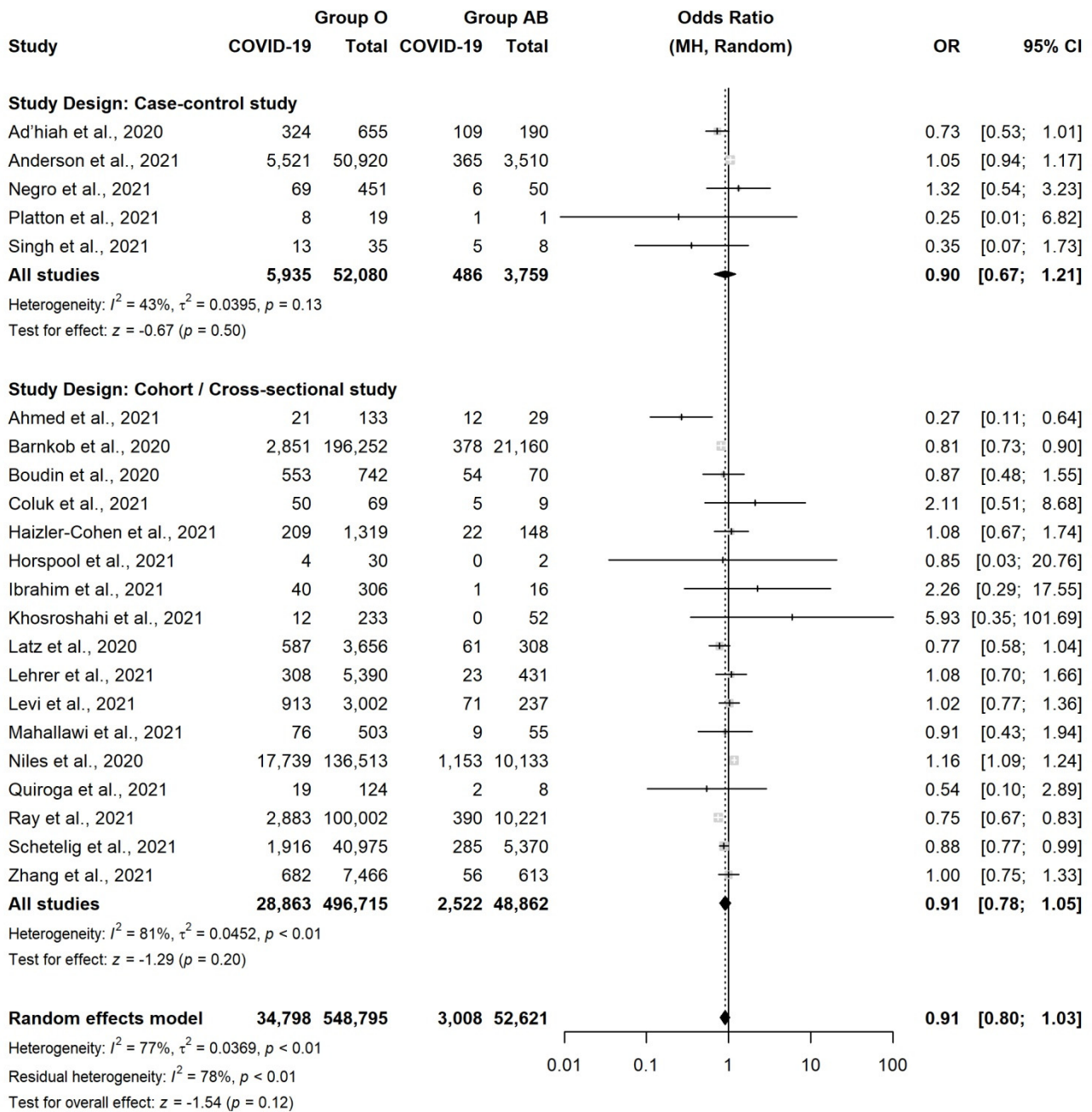


Figure S4: Forest plot for the occurrence of SARS-CoV-2 infection in patients with Blood Group O versus Group AB

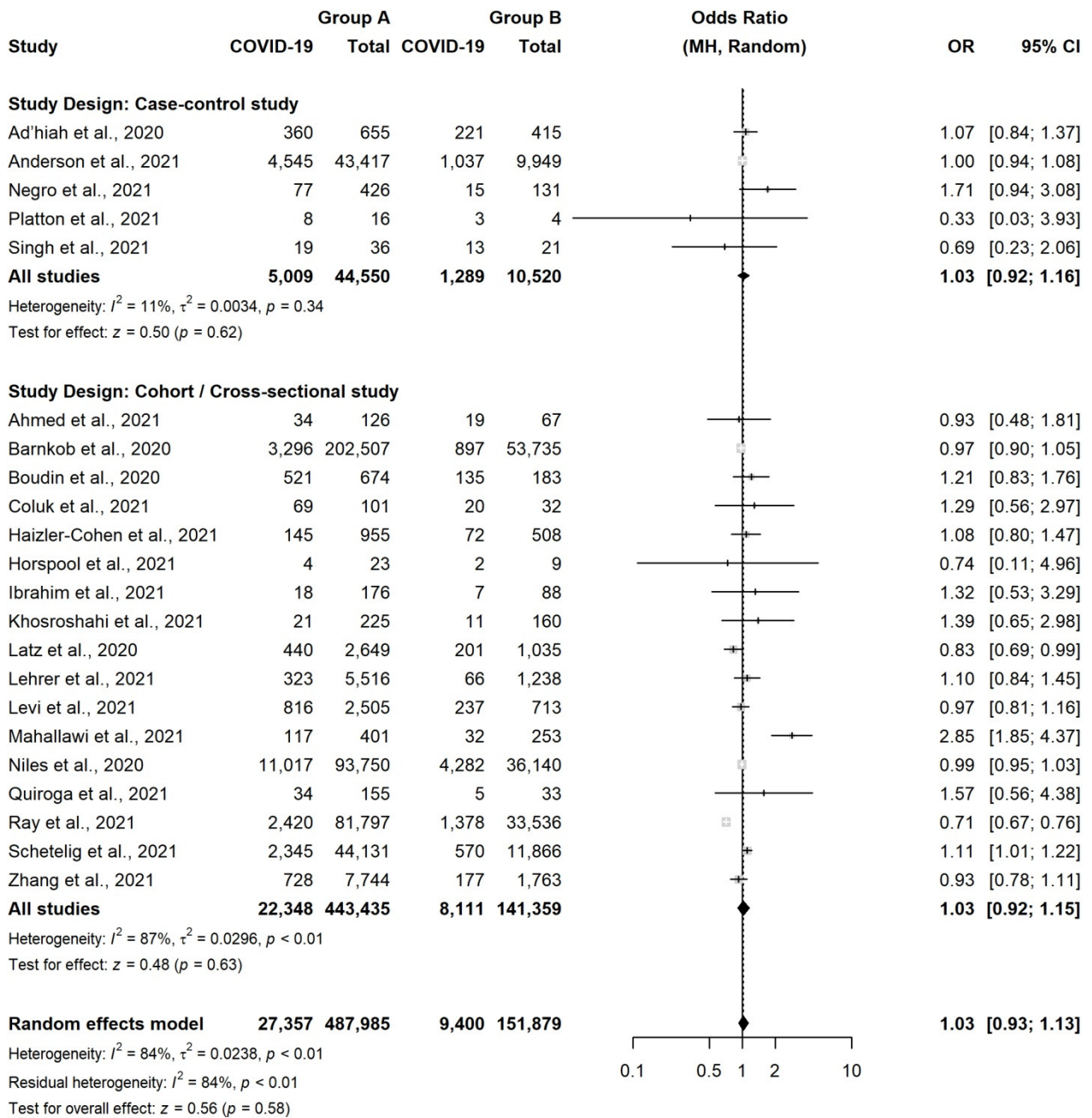


Figure S5: Forest plot for the occurrence of SARS-CoV-2 infection in patients with Blood Group A versus Group B

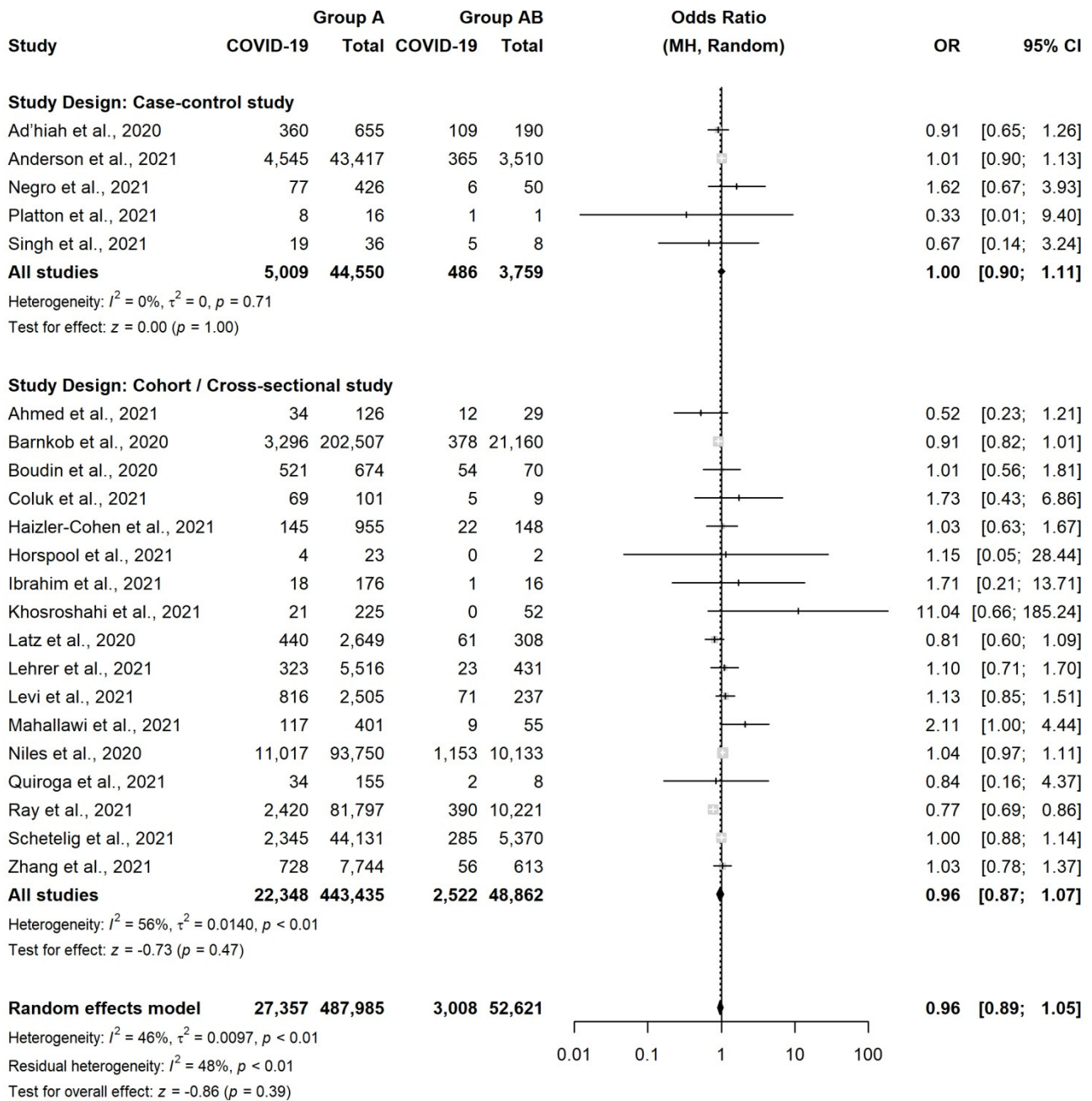


Figure S6: Forest plot for the occurrence of SARS-CoV-2 infection in patients with Blood Group A versus Group AB

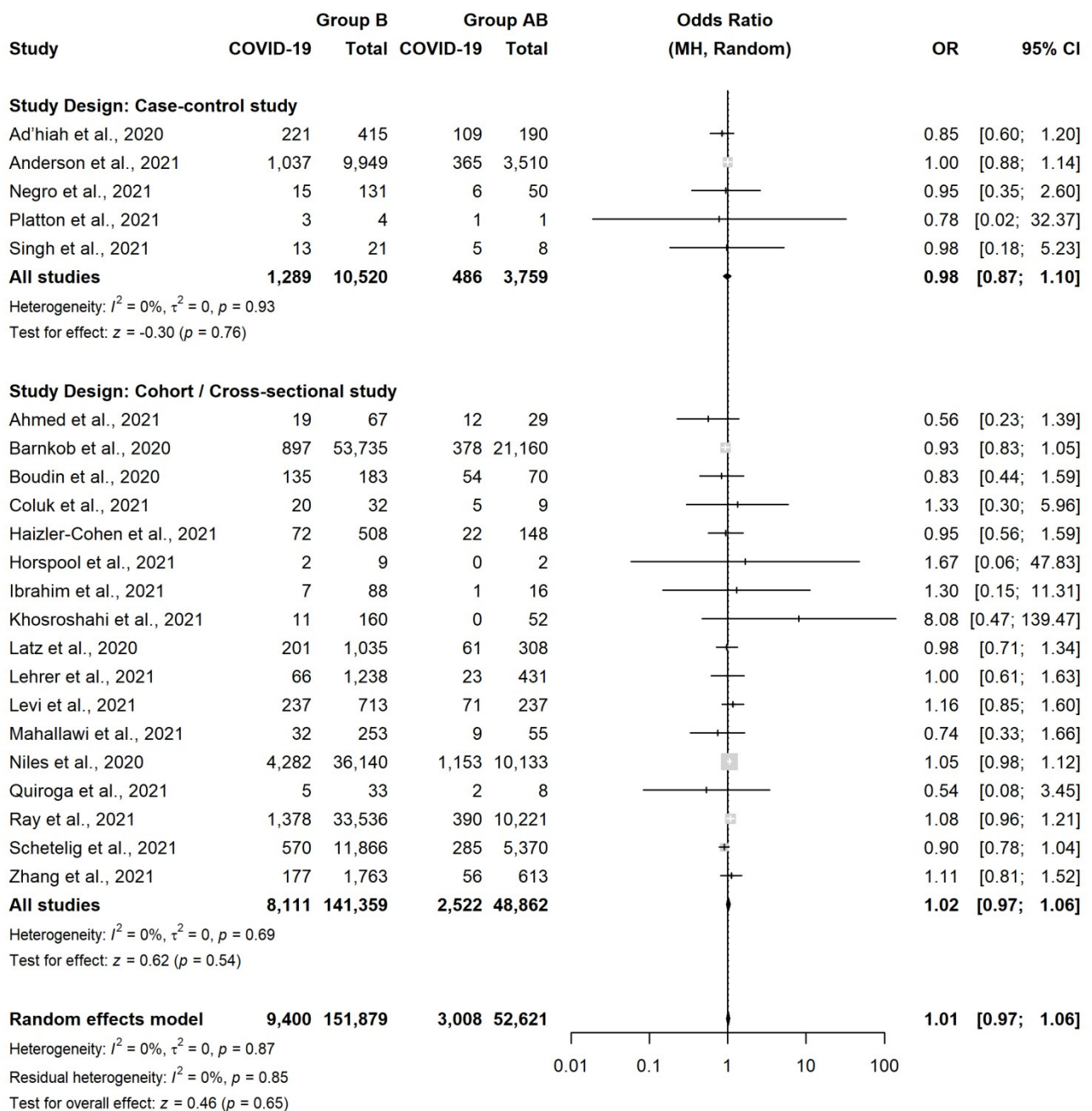


Figure S7: Forest plot for the occurrence of SARS-CoV-2 infection in patients with Blood Group B versus Group AB.